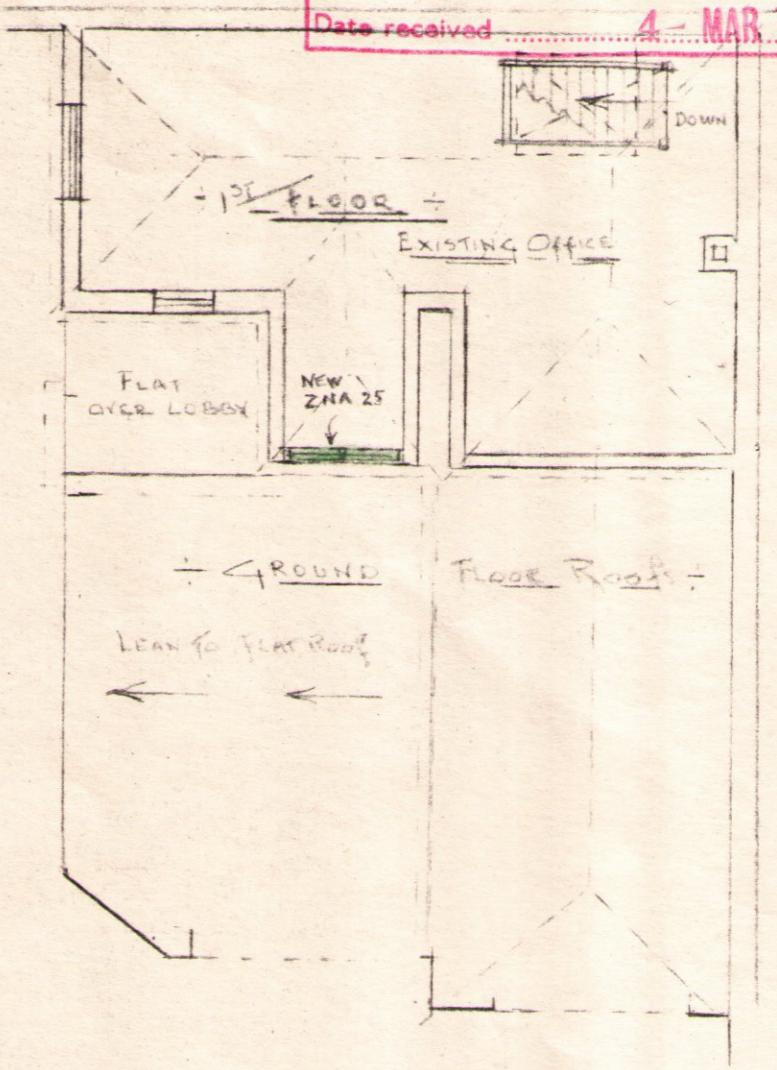
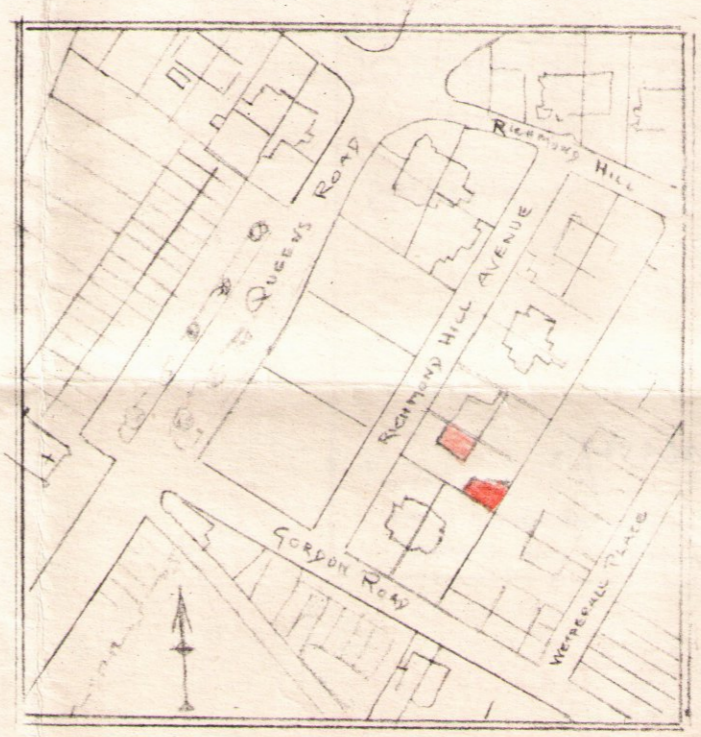


1/8" SCALE



No. 7 RICHMOND HILL AVENUE
CLIFTON, BRISTOL 8.

PROPOSED ADAPTATION OF OUTBUILDINGS
TO OFFICES
 FOR
GENERAL BUSINESS SERVICES (BRISTOL) LTD



SITE PLAN

FOR AND ON BEHALF OF
CHIVERS & THOMAS LTD.
 Director

CHIVERS & THOMAS LTD
 BUILDERS
 CLIFTON ROAD BRISTOL 8
 PLANK NO
 2428